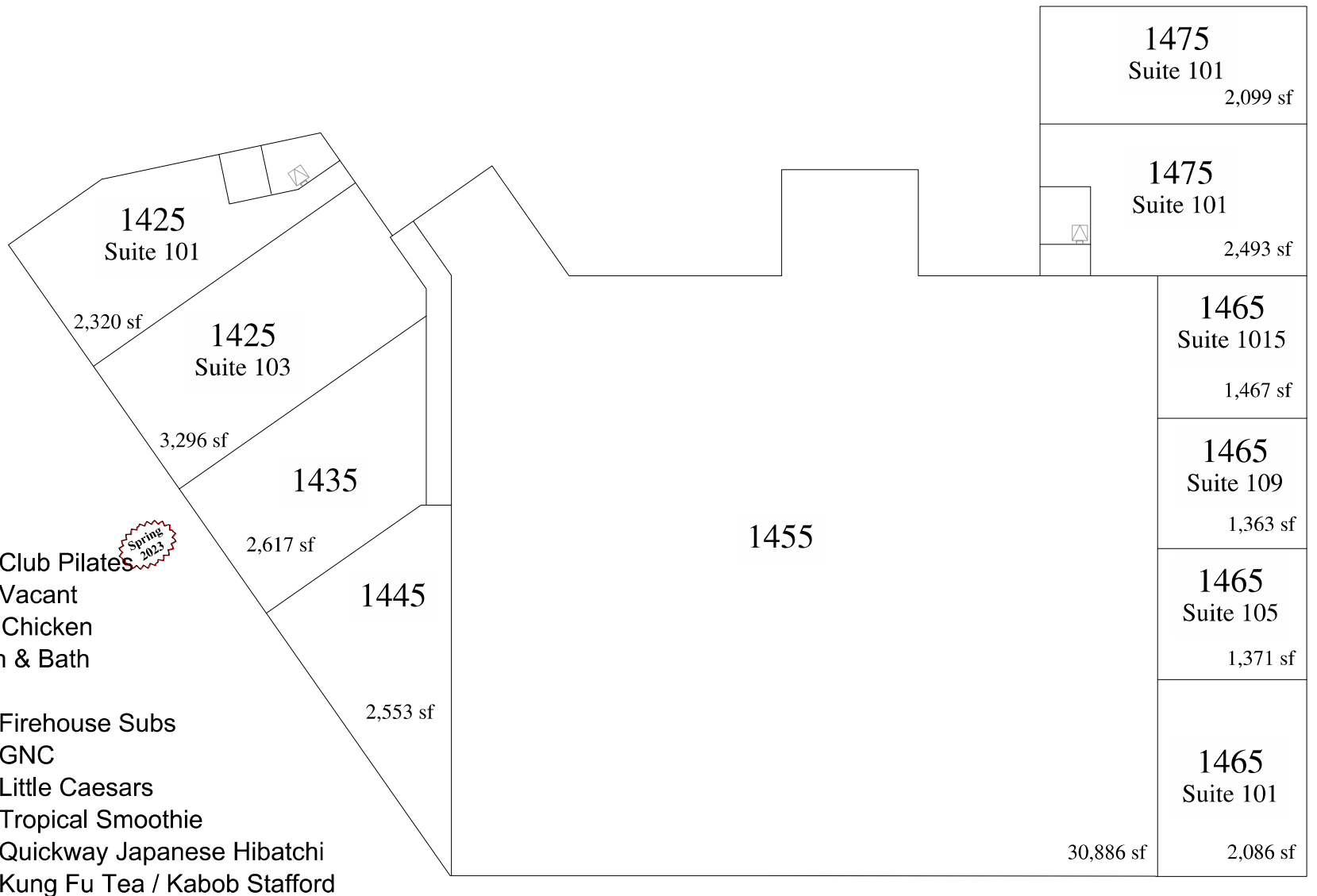


RETAIL SHOPS of STAFFORD MARKET PLACE



- 1425 - Suite 101 - Club Pilates
- 1425 - Suite 103 - Vacant
- 1435 - Super Rico Chicken
- 1445 - Star Kitchen & Bath
- 1455 - Best Buy
- 1465 - Suite 101 - Firehouse Subs
- 1465 - Suite 105 - GNC
- 1465 - Suite 109 - Little Caesars
- 1465 - Suite 115 - Tropical Smoothie
- 1475 - Suite 101 - Quickway Japanese Hibatchi
- 1475 - Suite 103 - Kung Fu Tea / Kabob Stafford

Building Details

Year Built: 2007 **Zoning Use:** B-2 General Commercial

Construction Type:

- II B Protected (2003 IBC)

Construction Materials:

- Steel / Masonry Structure with masonry exterior walls
- Membrane Roof & Concrete Floor

Fire Protection

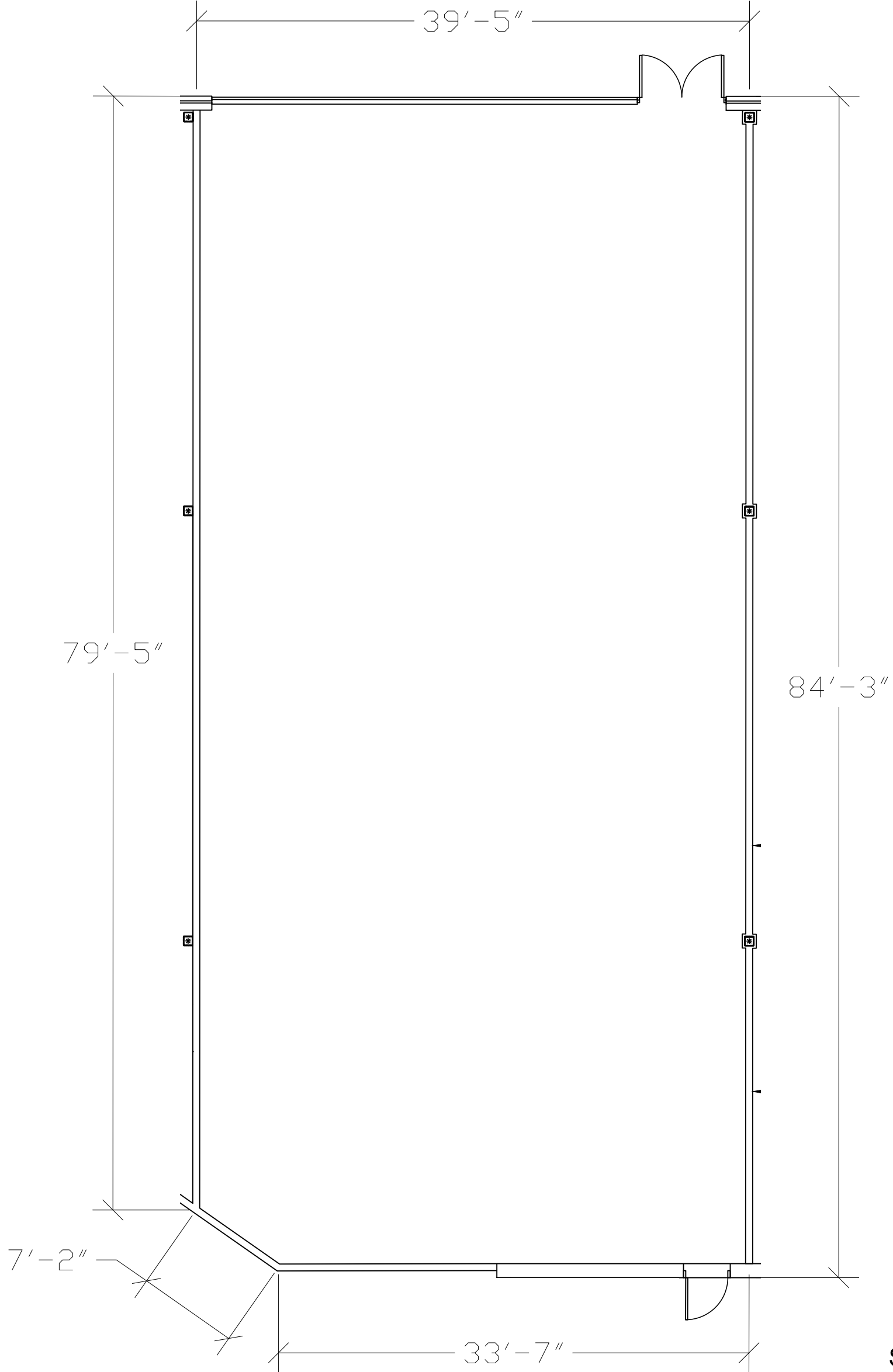
- Fully Sprinkled & Monitored

1425 Stafford Market Place - Suite 103

Size: 3,296 sf

Electric Service: 400A - 208/120V 3 Phase 4 Wire

HVAC: (2) 6 Ton Tran RTU / Gas Heat (2007)



Scale $\frac{1}{8}'' = 1'$

The Pence Group, Inc.

11708 Bowman Green Drive
Reston, VA 20190
O 703-827-8300 | F 703-827-9184
geoffp@pencegroup.com

Stafford Market Place - Stafford Virginia

Lease Outline Drawing

LOD

December 21, 2022